

# eSourcing and MBE

Prepared for MBE Supplier Summit  
Huntsville, AL



DISTRIBUTION STATEMENT B. Distribution authorized to only (proprietary and competition sensitive information) U.S. Government agencies and approved DoD contractors functioning as technical advisors to the Government team. Other requests shall be referred to Air Force Research Laboratory, 2977 Hobson Way, Building 653, Wright-Patterson AFB, OH 45433-7746. Nov 2010.

# Overview



- What is eSourcing and how does it fit into MBE?
- Past experience at ARDEC
- Next Steps
- Conclusions



# eSourcing: A Definition



A class of computer applications that automates, streamlines and documents the process of selecting a supplier and then obtaining a given product.

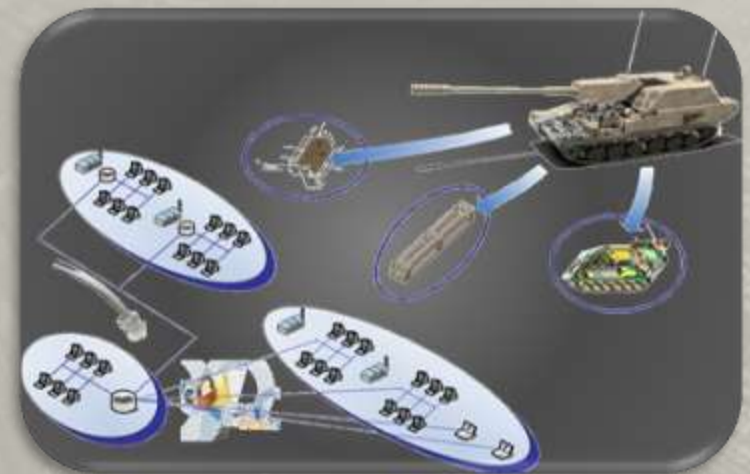




# The Model Based Enterprise (MBE) Connection



- eRFIs, eRFQs and POs can reuse and distribute the master model information to the supply chain
- Overall, eSourcing maximizes the reuse of the master model to minimize down stream re-mastering which is the core of MBE



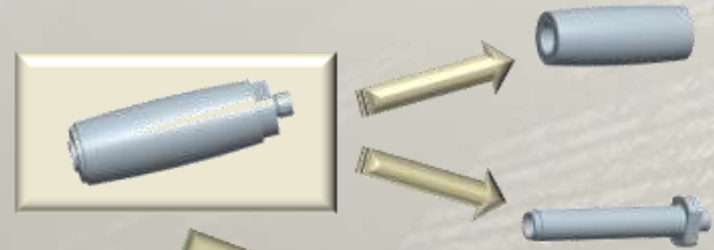
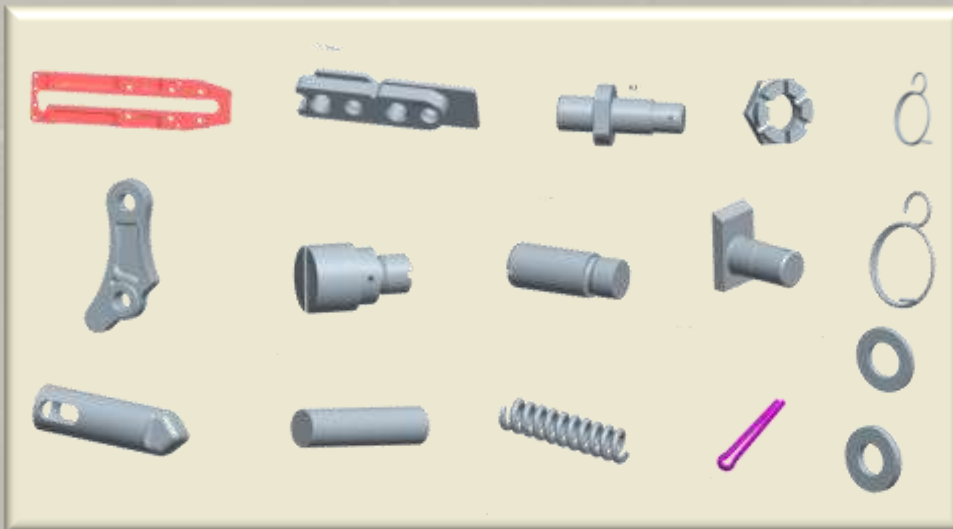
# ARDEC & DLA Pilots



- In 2008 & 2009 the Prototype Process and Material Technology Division at Picatinny Arsenal teamed with the Defense Supply Center Columbus Ohio to pilot the use of a 3D TDP to procure hard to source parts
  - This was based on a re-mastered 3D Model and an updated CAD drawing from a 1930 vintage hand drawing
  - In many cases a generic process definition was created and then distributed with the TDP
- The TDP was also distributed through an eSourcing web portal
  - This tool also aided in source selection and tracked the progress of the parts procurement



# M2 Machine Gun DSCC Parts



**M2 Slide Assembly,  
Retracting**



**M2 Latch Bolt**

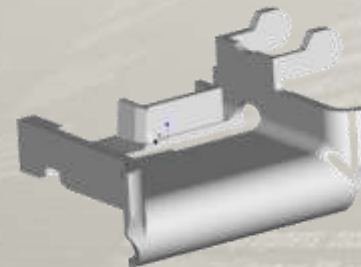
# M203 and M240 DSCC Parts



**M240 Machine Gun**



**M240C Feed Tray**



**M203 Grenade Launcher**



**Sear, M203**





# eSourcing Data



The Supplier Record maintains critical information on approval status, supplier capabilities, records of past project activity, etc

**Organizational Classification**

ORGANIZATION	COUNTRY	STATE/REGION
Aerofstructures	UNITED STATES	California
Hill-Ron	UNITED STATES	Indiana
TRW Automotive	UNITED STATES	---

**Commodity Classification**

COMMODITY	CODE	TYPE
Blanking	---	Standard
Machining, CNC Center	---	Standard
Machining, High Precision	---	Standard
Sheet Metal, Stamping 500 to 1000 ton press	---	Standard
Stamping, Four Side	---	Standard
Turnings, CNC	30019810	Standard

**Vendor Code Classification**

ORGANIZATION	VENDOR CODE	COUNTRY	STATE/REGION
TRW Automotive	TRW-09115-90	UNITED STATES	---

**Contact Information :**

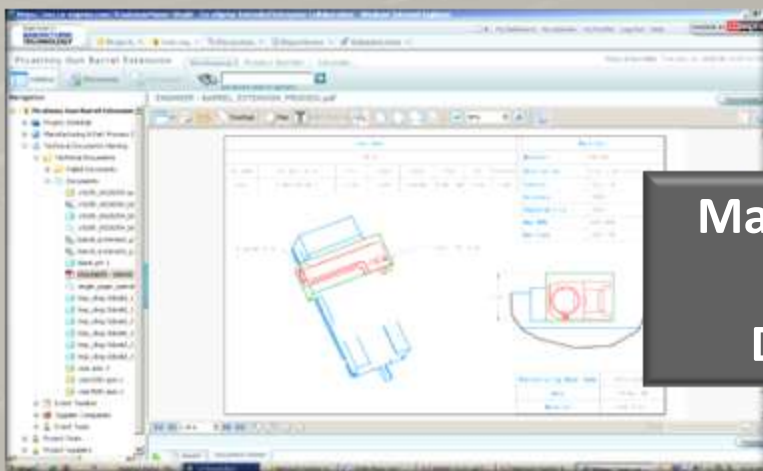
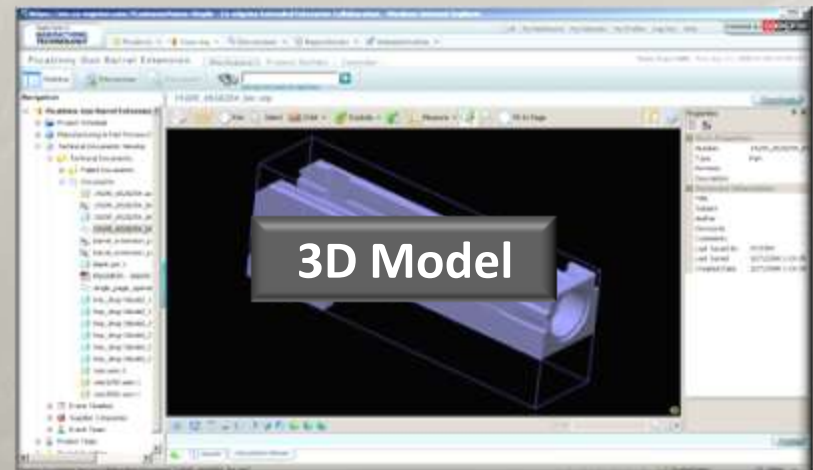
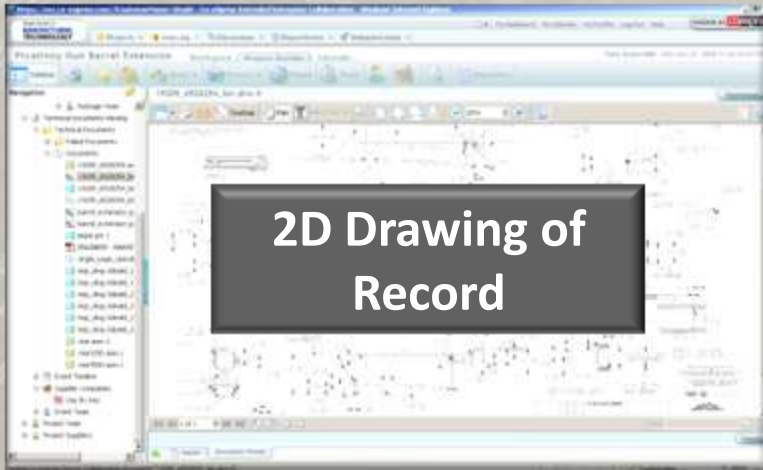
Phone Number: 91 729 2252821 E-Mail: sales@caparoengg.com  
Fax Number: 91 729 2507300 Web Site URL: http://www.caparoengg.com

**16 Projects**

- Automotive Components - Aftermarket - 2008 Sourcing Program
- AWB C256 Spacers
- Castings Sourcing - 2008
- Eaton Design and Sourcing
- Goodrich
- Goodrich - Datalink Project
- Goodrich NPI
- Hill-Ron Foot Pedal - Cast Out Program
- Lear - Seat Component Sourcing
- REACH Supplier Survey
- Stampings Sourcing 2008
- Stretcher Integration Module - NPI



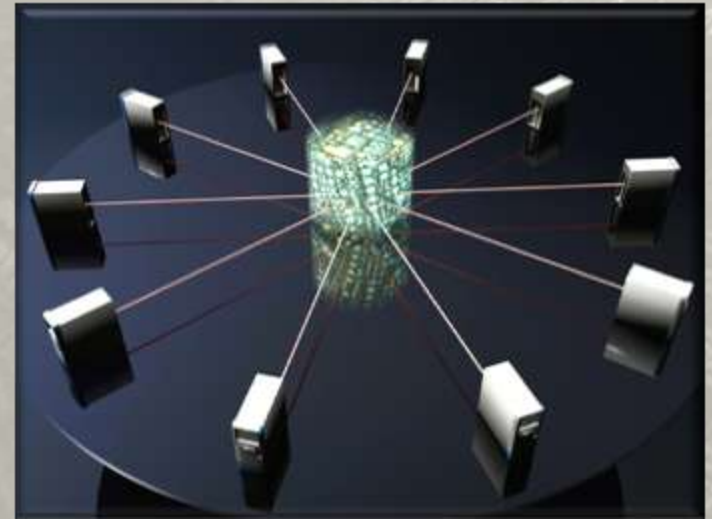
# Pilot TDP



# Future State



- TDPs will be based on a fully annotated model with 2D views that are on demand printouts
- The eSourcing tool will be fully integrated with the design repository and financial systems for a seamless exchange of data
- There will be a data base of pre-certified suppliers
- Source selection tools will notify suppliers when a RFI or RFQ is ready for a response



# Conclusions



- eSourcing will make it easier for both the DoD and the supply base to procure items
- The 3D TDP will help reduce the ambiguity found in traditional drawings
- In short, we will provide you what you need to do your job





# Questions

